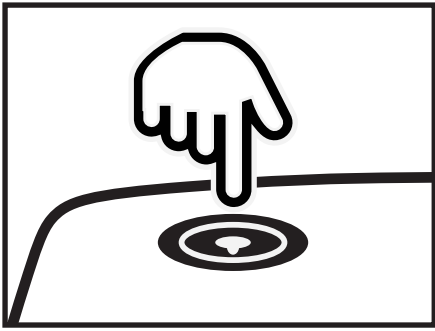
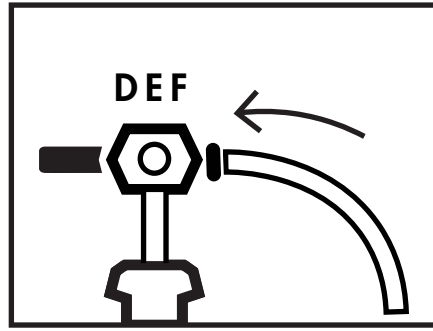


PADDLEBOARD PACKING INSTRUCTIONS

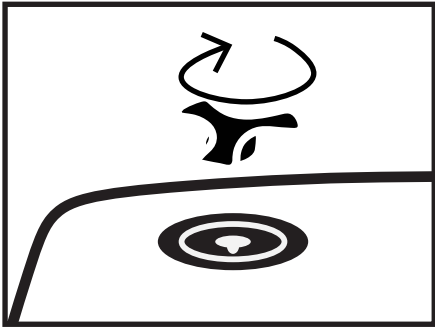


1. Unscrew valve cap, press down to open valve

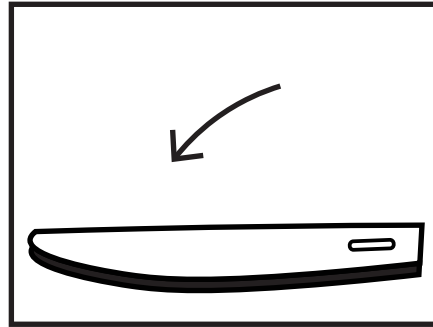


2. To remove air: attach hose to "DEF" side, pump until flat

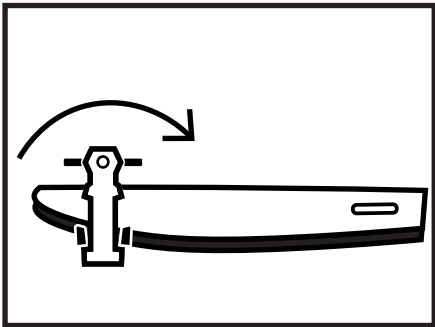
* or roll board from nose to tail to remove air



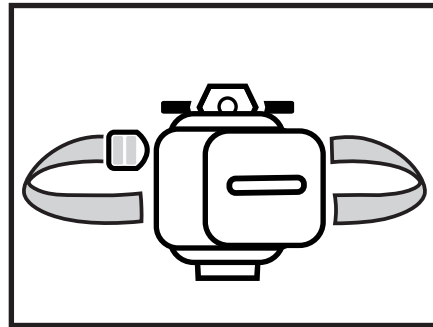
3. Rescrew valve cap



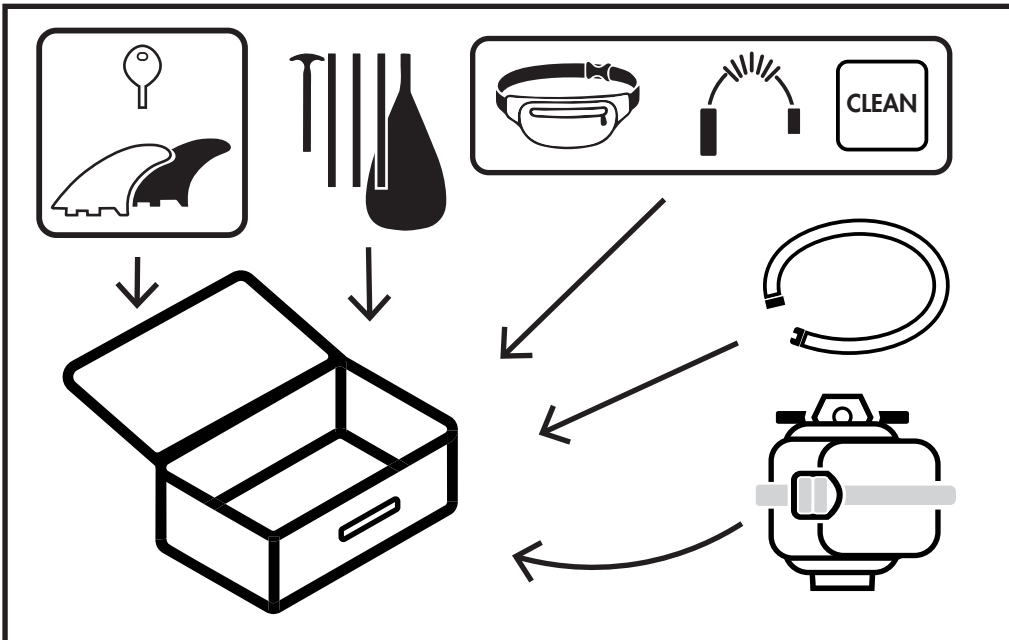
4. Fold board in half (bottom side facing out)



5. Place pump at nose, roll board around pump



6. Wrap rolled board with strap



7. Pack all parts in backpack:

- Board with pump
- Hose
- Paddle (x5 piece)
- Leash
- Inflatable PFD
- Cleaning kit
- Tarp`

FRONT POCKET

- Fins (x2)
- Fin key